

LTAP LTE6 KIT

A compact LTE6 capable weatherproof wireless access point



2.4 GHZ WIRELESS / 300 MBPS LTE6 / GIGABIT ETHERNET / BUILT-IN GPS

LtAP LTE6 kit

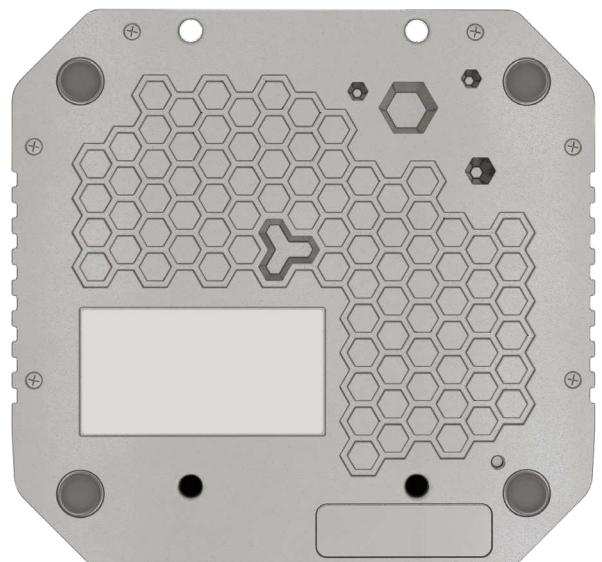
An upgrade of the heavy-duty LTE access point with GPS support

LtAP LTE6 kit is a compact 4G (LTE) capable weatherproof wireless access point – perfect for busy urban environment or off-the-grid outdoors networking. It has a built-in CAT6 cellular modem that supports 4G (LTE) connectivity out of the box – with up to 300 Mbps download speed!



- Built-in GPS
- Many powering options (DC jack, POE-in, automotive)
- Serial port and full size USB for other devices
- Perfect for cars or outdoor mobile applications

- 2.4 GHz AP in a rugged case
- LTE installed in miniPCle slot
- Second miniPCle slot for expansions
- Three Mini SIM slots
- Gigabit Ethernet port



CAT6 also enables carrier aggregation and allows the device to use multiple bands at the same time. A huge advantage when there are a lot of LTE users in the area. It provides better responsiveness in a crowded environment and higher efficiency for weaker signal situations in the countryside.

The rugged and extremely durable case with a special wall mounting kit will be ideal for almost any challenge: from public transportation, food trucks or logistics to harsh winter and stormy desert environment. LtAP can handle any temperature from -40 C° to +70 C°. It is a superb solution for tracking vehicles in real time. We have provided a simple tracking application example in the RouterOS documentation to help you get started. LtAP LTE6 kit even has 3 Mini-SIM slots for easy roaming management. Saves your time and money worldwide!

The unit comes with an extra miniPCIe slot, offering many expansion options. For example, you can install a second LTE modem for redundancy or a 5 GHz interface to have dual concurrent 2.4 GHz / 5 GHz AP + LTE. Another miniPCIe slot is already populated with the LTE modem.



LtAP LTE6 kit has a RS232 serial port, which gives you console access for debugging, as well as full size USB for other devices. There is a Gigabit Ethernet LAN port for your wired devices and several power options – DC jack, POE-in and automotive.

The LtAP LTE6 kit is more than an access point – it is what you need it to be wherever you need it to be!

Specifications

Product code	RBLtAP-2HnD&R11e-LTE6
CPU	Dual-core MediaTek MT7621 880 MHz
Size of RAM	128 MB
Storage	16 MB flash
10/100/1000 Ethernet ports	1
Wireless	2.4 GHz 802.11b/g/n dual-chain
Wireless regulations	Specific frequency range will be limited by country regulations
Wireless antenna max gain	2.5 dBi
LTE antenna max gain	4 dBi (with U.FL connector)
Antenna beam width	360°
LTE category	6 (300 Mbps downlink, 50 Mbps uplink)
3G category	R7 (21 Mbps downlinks, 5.76 Mbps uplink) R8 (42.2 Mbps downlink, 5.76 Mbps uplink)
2G category	Class12
Supported input voltage	DC jack or automotive connector 12 - 30 V
PoE in	Passive PoE 12 - 30 V
Dimensions	170 x 162 x 40 mm
Operating temperature	-30°C .. +70°C
Operating system	RouterOS, License level 4
Mini SIM slots	3
MiniPCIe slot #1	Top slot supports PCIe and USB 2.0 cards, but is shared with the USB 2.0 type A port (can use either USB port or miniPCIe slot at the same time)
MiniPCIe slot #2	Bottom slot supports only USB (2.0 and 3.0) miniPCIe modems (no PCIe support)
USB port	1 USB 2.0 port type A (can only be used if miniPCIe slot #1 is not used)
Built-in GPS	Yes (external antenna option via MMCX connector)
Serial port	RS232
Max power consumption	24 W

Supported bands

LtAP LTE6 kit

LTE (FDD) bands	1(2100)/2(1900)/3(1800)/5(850)/7(2600)/8(900)/12(700)/17(700)/20(800)/25(1900)/26(850)
LTE (TDD) bands	38(2600)/39(1900)/40(2300)/41n(2500)
3G bands	1(2100)/2(1900)/5(850)/8(900)
2G bands	2(1900)/3(1800)/5(850)/8(900)

Wireless specifications

Rate (2.4 GHz)	Tx (dBm)	Rx (dBm)
1MBit/s	25	-100
11MBit/s	25	-94
6MBit/s	26	-96
54MBit/s	23	-78
MCS0	26	-96
MCS7	22	-73

Included parts



24 V 1.2 A
power adapter



Screw kits



Automotive cable